

# Oakham WI Newsletter

## June 2025

### Next Monthly Meeting - 24th June 7.15pm for 7.30pm start

#### Bill Bayley - Life on the Royal Yacht Britannia.

We are looking forward to welcoming Bill Bayley to our June meeting. Bill spent 27 years in the Royal Navy of which seven were spent in Royal Yacht service. After working on the royal yacht he trained in bomb and mine disposal which meant him one of the first team members charged with re-taking the Falkland Islands; he was awarded the British Empire medal on his return.



#### FROM OUR PRESIDENT

##### From our President ...

Firstly, I would like to thank all of you who completed our recent Member Engagement Survey, because your feedback will be invaluable in planning for the future. The results make very interesting reading and your comments and ideas – always welcome – provide plenty of food for thought.

Thank you for your lovely comments on the work of the committee – it is always great to hear that our efforts are appreciated.

Personally, I do feel that we can find a way forward for the group and am confident that Oakham WI will continue to thrive beyond the AGM in October this year.

Whether home or away, I hope you have been enjoying the beautiful summer weather we have been experiencing and hope the heatwave conditions haven't caused you too many problems.

I look forward to seeing you on Tuesday for our June members' meeting.

Jackie

#### Remember for the meeting:

- Please remember to have the correct money (£1) for the door fee together with £1 for the raffle if you want to take part.
- Wear your lanyard so that everybody knows who everybody is.
- Any small change for Peppers - a safe place.
- Bring your cheque book if you do not use internet banking.

Please also ensure that you carry a note of who we can contact in the case of an emergency and details of any medication that a first responder might need to know about. This should be carried in an easily accessible place when attending meetings and events.

# Oakham WI Newsletter

## June 2025

### Payment for events/activities

When paying for events/activities in which you are taking part, could we please ask that you pay either directly online by bank transfer (the preferred option) to:

Oakham Women's Institute

Sort code: 08-92-99

A/c no: 67228391

or by cheque, handed directly to our Treasurer - Linda B - or another member of the committee acting on her behalf.



We would prefer if you **DID NOT** pay cheques into the WI account, because although these show on our bank records, we have no reference with which to reconcile the payment; we can not see who has made the payment, or what it is for.

Your cooperation in this matter would be very much appreciated.

### Oakham WI WhatsApp group

If you would like to join the Oakham WI WhatsApp group- a fun and informal way of keeping in touch with other members, sharing local information, etc - please email Jackie on [oakhamwi@gmail.com](mailto:oakhamwi@gmail.com), giving her your mobile number and she will send a link for you to join.

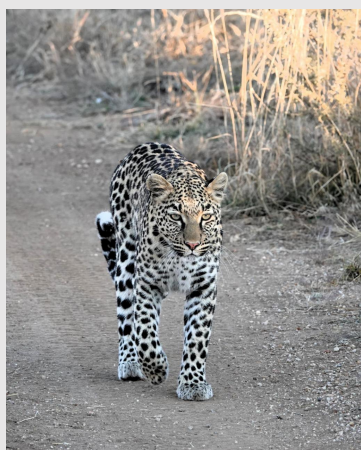


Please remember WhatsApp is an open forum, visible to many of our members, and sensitive, confidential or private information should not be shared.

### Member's travels:



Maureen enjoyed a Rhine cruise



Jill enjoyed tea with giraffes in Namibia and was pleased that the leopard didn't seem to want her for his tea.

Please send me photos of your July travels for the next newsletter.

# Oakham WI Newsletter June 2025

## Recent Events

### June Ramble

Four of us walked around the Hambleton peninsular, a total of 4.9 miles, on one of the hottest days of the year so far.

We parked in the centre of Hambleton and decided to walk down the steepest hill on the route to the southern shore of the peninsular, rather than walk up it at the end of our walk and set off in the sunshine. There was hardly any breeze and the water was like a millpond - very tranquil. The way, following the route of the Rutland Water cycle path from then on, was quiet, with very few other walkers, runners or cyclists, just the birdsong to accompany us. There was also quite a lot of shade from the trees, which meant the experience was much more pleasant.

One interlude along the way involved rescuing a lamb, which had managed to get itself stuck between two fences. It was quite tame and did seem to want to walk with us for a short way, but we hope it managed to find its way back to its mother in due course.

Having completed the walk, the call of The Finches Arms was too strong and we sat in the lovely garden enjoying a cold drink before heading home.

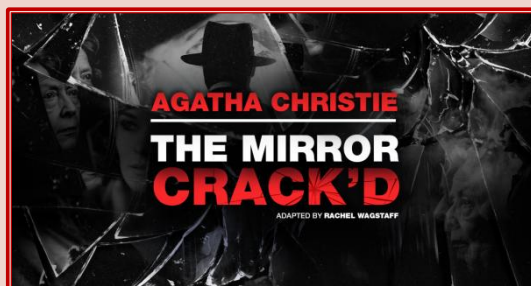


### The Mirror Cracked at Tolethope

On a perfect summer's evening, a group of Oakham WI members, some partners and friends (14 in total) met on the lawn at Tolethorpe Hall for drinks, prior to the performance by the Stamford Shakespeare Company of The Mirror Cracked – an Agatha Christie murder mystery. The play was funny and extremely well staged, with ingenious set designs and gorgeous costumes. The plot left us guessing about the culprit until the very end; here's a clue

'the butler DIDN'T do it'!

The whole evening was most enjoyable.





# Oakham WI Newsletter June 2025

## Recent Events

### Adventure Golf at Ferneley's

It was a lovely sunny day, albeit slightly windy, for our annual trip to Ferneley's for Adventure golf and lunch in The Dairy Barn Cafe. We divided up into two teams of four and one of three to tackle the course. None of us took it too seriously, although several 'Hole in Ones', were applauded loudly. The winning round of 21 came from Val H. Well done everybody!



Lunch and, in some cases, ice cream followed the golf. The food was excellent, as always, and we were very well looked after by the staff. We were accommodated in the Function Room - a private space, where our lively conversation couldn't disturb other customers.



**Right:**  
Jenny G  
Gillian  
Margaret T  
Sharon  
Chris L  
Diane  
Alison  
Michelle  
Jackie  
Val



### History group visit to The Old Manor, Long Clawson, Wednesday 4 June.

The Old Manor is a fascinating house, which has required considerable repairs and alterations in the 25 years since the current owner Revd Simon Shouler bought the property.

He dressed in character as Sir Henry Hastings, who had the house built in 1610 and led the tour around the property, describing the changes that had been necessary to maintain the integrity of the house.

Fantastic cakes, scones, etc were served with tea/coffee in the church afterwards.



Left clockwise: Margaret H, Alison, Diane R, Jackie, Diane, Gill P, Maggie.

Thank you to Liz H for the photos



# Oakham WI Newsletter June 2025

## Upcoming Events

### Rambles and Ambles

Most months we offer a walk or two in order that we can get out in the fresh air and improve both our physical and mental health. Our walks are described as rambles or ambles. A ramble is normally between 3.5 and 4.5 miles and will involve some gentle climbs with the benefit of lovely views of the beautiful Rutland countryside. Ambles tend to be under three miles and are often on flatter terrain. Both ambles and rambles end with a social coffee or light lunch.

### Market Overton Ramble - 4.1 miles -Monday 7 July 10.15

For our July ramble we will start in Market Overton and walk across arable fields to Edmondthorpe. There are some gentle climbs rewarded by beautiful views across to Stapleford and Whissendine.

After our walk we will enjoy light refreshments at the cafe at the Lodge Trust in Market Overton. The cafe provides adults with learning disabilities the chance to take part in work-based training. Profit is put back into The Lodge Trust charity, which then enables them to give more people the opportunity to gain skills in catering, hospitality and tourism.

Please register your interest by emailing [oakhamwievents@gmail.com](mailto:oakhamwievents@gmail.com) with Ramble in the subject bar to add your name to the list, stating whether you want to walk or just join us for refreshments. Car shares will be organised once we know participants.



# Oakham WI Newsletter June 2025

## Upcoming Events

### Summer Outing - Drayton House - Wednesday 16 July

**This is a unique opportunity to visit an impressive house not normally open to the public.**

We will be travelling by coach to the village of Lowick in Northamptonshire to visit Drayton House which has been described:

*'One of the best-kept secrets of the English country-house world, Drayton has remained hidden, mysterious, rarely open, guarding its privacy' across more than 700 years. Though 'far less well-known than*

*the other Sackville house at Knole in Kent, Drayton similarly resembles a small fortified village in a parkland setting, retains outstanding C17 and C18 furnishings, and has not been subject to major alterations during the past 200 years.'*

There is an article in the independent which gives an insight to this special building:

<https://www.independent.co.uk/arts-entertainment/films/news/saltburn-mansion-house-real-drayton-b2473869.html>

On arrival in Lowick we will visit St Peters church where the churchwarden will point out the main features of the church including the Jesse Window dating from around 1330 depicting 16 figures, the ancestors of Jesus.

After our visit to the church we will have lunch at the Snooty Fox, a renowned gastropub: One review states: *"What a great place, from the moment we stepped in we were beautifully looked after. Staff could not do enough for us, and always on hand and chatty without being obtrusive. We had beer, cocktails and wine, all excellent and the food was outstanding across the board."* Linda our treasurer, has negotiated a special price for our lunch at this impressive restaurant.

After our lunch the coach will drive us through the grounds to the house where we will enjoy our tour before returning by coach to Oakham.

In order that this visit is affordable for as many members as possible it is being subsidised from our funds in accordance with the objectives of the WI. "To advance the education of women and girls for the public benefit in all areas, including cultural subjects"

We are therefore to charge £45 for this visit which includes return coach, the visit to the church, a guided tour of Drayton House, and a two course lunch, which I am sure you will agree is excellent value for money. (those who have already paid £50 will receive a partial refund.)

To book your place either sign up at the June meeting or email [oakhamwi@gmail.com](mailto:oakhamwi@gmail.com) with Drayton in the subject bar.



By Drayton House: north-east wing by John Sutton, CC BY-SA 2.0, <https://commons.wikimedia.org/w/index.php?curid=108786249>



## Oakham WI Newsletter June 2025

### Dates for your diary

| Date and time                           | Event   |
|---|---|
| <b>Wednesday 25 June</b><br>2pm         | <b>Social Sixes</b>   |
| <b>Friday 4 July</b>                    | <b>Federation Quiz</b>  |
| <b>Monday 7 July</b><br>10.15am         | <b>July Ramble: Market Overton</b>  |
| <b>Wednesday 16 July</b>                | <b>Summer Outing to Drayton House by coach<br/>with lunch at the Snooty Fox, Lowton</b> |
| <b>Wednesday 6 August</b><br>10.15am    | <b>August Ramble: Harringworth</b>  |
| <b>Tuesday 9 September</b><br>12 noon   | <b>Petanque</b>   |
| <b>Thursday 18 September</b><br>10.30am | <b>Canal walk and coffee</b>  |
| <b>Monday 6 October</b><br>am           | <b>Craft session</b>  |
| <b>Wednesday 15 October</b><br>10.30am  | <b>Edith Weston walk and lunch</b>  |
| <b>Wednesday 19 November</b><br>pm      | <b>Craft session</b>  |
| <b>Monday 15 December</b><br>am         | <b>Christmas Table decoration</b>   |

Remember you can also look at our website for details of future meetings and events and also photographs from previous events: <https://wioakham.wixsite.com/mysite>

# Oakham WI Newsletter June 2025

## Federation quiz answers:

### Hit The Road!

Find 50 well-known words to do with roads, vehicles, signs, hazards, warnings etc.

(nb. Editor's decision final: wrong spellings &/or miscounted no. of letters will be marked as incorrect)

**50**

£1.00 ENTRY, £25.00 PRIZE!

In event of a tie, there'll be a draw  
(all proceeds to Leics/Rutland Fed  
of Women's Institutes)

|     |   |                     |
|-----|---|---------------------|
| 1.  | Duck! (3,6)   | LOW BRIDGE          |
| 2.  | On hands and knees up this small road (7,4)         | CRAWLER LANE        |
| 3.  | Principal highway (4,4)                             | MAIN ROAD           |
| 4.  | LOANERS WARN (6,5 Anag)                             | NARROW LANES        |
| 5.  | Circular - and magic! (10)                          | ROUNDBABOUT         |
| 6.  | Sounds like annoyed highways (10)                   | CROSSROADS          |
| 7.  | Ponder a 2-wheeler (5,4)                            | THINK BIKE          |
| 8.  | Lines are probable (6,6)                            | QUEUES LIKELY       |
| 9.  | Drivers' rulebook (7,4)                             | HIGHWAY CODE        |
| 10. | Goes nowhere (2,7,4)                                | NO THROUGH ROAD     |
| 11. | Obviously no torso or limbs! (5,4)                  | AHEAD ONLY          |
| 12. | Stay behind me (2,10)                               | NO OVERTAKING       |
| 13. | HIS ONE ABLE CAB (7,6 Anag)                         | BELISHA BEACON      |
| 14. | Haste is deadly (5,5)                               | SPEED KILLS         |
| 15. | They began trying hard to inform us internally (6)  | GANTRY              |
| 16. | Contrary slope (7,6)                                | ADVERSE CAMBER      |
| 17. | Kath's gerbil has gone crazy! (5,6)                 | BRAKE LIGHTS        |
| 18. | Constrain, alongside the road (4)                   | KERB                |
| 19. | Felix can see you from the middle with these! (4,4) | CATS EYES           |
| 20. | You can't leave that here! (2,7)                    | NO PARKING          |
| 21. | Middle of the road room booking (7,11)              | CENTRAL RESERVATION |
| 22. | BREAM (5, Anag)                                     | AMBER               |
| 23. | Stop then mount (4,3,4)                             | PARK AND RIDE       |
| 24. | Solid joint (4,8)                                   | HARD SHOULDER       |
| 25. | Don't rush (4)                                      | SLOW                |
| 26. | Inside the album personal to you (6)                | BUMPER              |
| 27. | Crossroad illuminations (7,6)                       | TRAFFIC LIGHTS      |
| 28. | Wear out tube (7,4)                                 | EXHAUST PIPE        |

©sml/250329 reproduction and/or distribution of this quiz by hard copy, by electronic means or via the internet is strictly forbidden  
without prior and explicit permission of the compiler.



# Oakham WI Newsletter June 2025

## Federation quiz answers:

|     |   |                                   |
|-----|---|-----------------------------------|
| 29. | Pistols at dawn on the wide road? (4,11)          | DUAL CARRIAGEWAY                  |
| 30. | Very able nurse at the start (3)                  | VAN                               |
| 31. | Carton connection (3,8)                           | BOX JUNCTION                      |
| 32. | HALTED SIGH (10, Anag)                            | HEADLIGHTS                        |
| 33. | No buses, trains or bobbies here, just fuel (7,7) | FILLING <u>OR</u> SERVICE STATION |
| 34. | Ensure good visibility (4,5)                      | KEEP CLEAR                        |
| 35. | Finish (3)  | END                               |
| 36. | Let me pass! (4,3)                                | GIVE WAY                          |
| 37. | Just police, ambulance and fire engines (9,8,4)   | EMERGENCY VEHICLES ONLY           |
| 38. | SNAILS PACE GPS (7,6 Anag)                        | PASSING PLACES                    |
| 39. | Not a manoeuvre Thatcher cared for (1-4)          | U-TURN                            |
| 40. | Display bygone items within (5)                   | LAYBY                             |
| 41. | Clever highway (5,8)                              | SMART MOTORWAY                    |
| 42. | This carrier moves cars (11)                      | TRANSPORTER                       |
| 43. | USA = sidewalk (8)                                | PAVEMENT                          |
| 44. | Henry's Model T warns of wet crossing (4)         | FORD                              |
| 45. | Faulty flights go in mist (3,6)                   | FOG LIGHTS                        |
| 46. | Forbid to imbibe and operate (4,5,3,5)            | DON'T DRINK AND DRIVE             |
| 47. | FORGES VETS (4,6 Anag)                            | SOFT VERGES                       |
| 48. | Stay away from me! (4,4,8)                        | KEEP YOUR DISTANCE                |
| 49. | Highway graft (9)                                 | ROADWORKS                         |
| 50. | Oil Pack it in!! (4)                              | STOP                              |



©sml/250329 reproduction and/or distribution of this quiz by hard copy, by electronic means or via the internet is strictly forbidden without prior and explicit permission of the compiler.

# Oakham WI Newsletter June 2025

## Community News



The Leicestershire Archaeological & Historical Society's

### 170TH ANNIVERSARY HISTORY FAIR

A **FREE** fun-filled day of hands-on activities, re-enactments and living history at Oakham Castle plus amazing expert talks at Rutland County Museum

For more information:

SCAN ME



5TH  
JULY  
2025 | 10AM  
-  
4PM



Oakham  
Castle

HIDDEN HISTORIES  
HERITAGE EVENTS



# Oakham WI Newsletter June 2025

## Community News



**TOUR & TEA**



## OAKHAM GUIDED TOUR

Join our guided walking tour of historic Oakham, starting from Oakham Castle, and then enjoy a cup of tea/filtered coffee and a small brownie or a slice of lemon drizzle cake at the delightful Castle Cottage Café



**SATURDAY 9TH AUG 2025**  
**TOUR 2PM - 3PM**  
**TEA 3PM - 3.30PM**  
**£14**

SCAN ME



[www.oakhamcastle.org/events](http://www.oakhamcastle.org/events)

[www.oakhamcastle.org](http://www.oakhamcastle.org)  
email: [castle@rutland.gov.uk](mailto:castle@rutland.gov.uk)



Oakham  
Castle



Rutland  
County Council